

PASSAIC COUNTY LOCALITY GUIDE

Written by Darren Petrosino, edited by Joan E. Betancourt



Background

Quick Facts

The history of Passaic County as an official polity begins on February 7, 1837, when it was created from parts of neighboring Bergen and Essex Counties. Its county seat, Paterson, is its most populous city.¹

Passaic County is named after the river that winds through it, which in turn is named after *Pasaeck*, the Unami-Lenape word for “valley.” Due to the locality’s proximity to New York, the earliest European settlers of the county were Dutch.² Immigration during the following centuries was largely driven by factory work, especially silk production in Paterson.³

¹ Wikipedia (www.wikipedia.org), “Passaic County, New Jersey” : accessed 17 May 2024.

² Wikipedia (www.wikipedia.org), “Passaic County, New Jersey” : accessed 17 May 2024.

³ Mark S. Auerbach, “An Overview of the History of the City of Passaic, New Jersey,” 1998 (<https://www.cityofpassaic.com/DocumentCenter/View/220/From-Its-Founding-to-1998---A-Historical-Overview-of-Passaic-PDF>) : accessed 17 May 2024.

Known Beginning Dates for Government County Records ⁴						
Birth*	Marriage	Death*	Court	Land	Probate	Census
1901	1837	1901	1900	1837	1837	1830
*Statewide registration for births and deaths started on 1 May 1848. General compliance by 1920.						

Online Research Guides

FamilySearch wiki:

https://www.familysearch.org/en/wiki/Passaic_County,_New_Jersey_Genealogy#

Geography and Maps

John F. Snyder's [Bulletin 67, The Story of New Jersey's Civil Boundaries 1606 - 1968](#) is available for free on New Jersey's government website. Passaic County's chapter begins on page 209.

Gazetteer for the state of New Jersey: <https://www.loc.gov/item/01007747/> - by Thomas F. Gordon

Maps

Rutgers University's Cartography Lab has collected several historical maps of Passaic County, which together illustrate how the county has been shaped around both iron mines and the Passaic River's usage, drainage, and pollution. Some are collected online from Rutgers' special collections and can be found on [this link](#).

The Library of Congress has fully digitally archived [Atlas of Passaic County, New-Jersey](#) [sic], compiled by E.B. Hyde and Co., circa 1877, and preserved by the American Photo-Lithographic Company.

Sanborn Fire Maps of the area can be found at Princeton University Firestone Library's Special Collections, located in Mercer County. Descriptions of what databases contain can be found [online](#). The 1935 Sanborn Fire Map for Clifton can be found [here](#). ***With the notable exception of the Scheide Special Collections, no advanced appointments are required.***

Timeline of Major Events

Timeline of the area including major government changes and events can be found here:

⁴ FamilySearch, Passaic County, New Jersey Genealogy (https://www.familysearch.org/en/wiki/Passaic_County,_New_Jersey_Genealogy#cite_note-3) : accessed 17 May 2024.

<https://www.nps.gov/pagr/learn/historyculture/the-birthplace-of-the-american-industrial-revolution.htm>

History⁵

Passaic County was formed 7 February 1837 and was named for the Passaic River.⁶ This timeline is organized with respect to the “boroughitis” that fractured North Jersey municipalities in the late 19th to early 20th centuries.

Pre-1678	The Lenni Lenape tribe were the original inhabitants of Passaic County.
April 4, 1678	Hartman Michielsen Vreeland bought an island in the Passaic River from the Lenape Indians, through the first deed in the county’s history, While the land was originally planned as a base for fur trapping, it now exists as Dundee Island Park in the City of Passaic. ⁷⁸
October 1693	Acquackanonk Township was founded in what was then Essex County. Made possible by the several deeds signed in the aftermath of Vreeland’s purchase, which opened up more and more of Passaic’s land to European settlers. ⁹ <ul style="list-style-type: none">• 1854: Village of Passaic formed within Acquackanonk, following a town vote.¹⁰• 1869-1873: An Acquackanonk community renames itself the City of Passaic. Officially incorporated on April 2, 1873.¹¹• April 26, 1917: What remained of Acquackanonk was renamed Clifton.¹²
November 1791	Paterson is chartered as a planned industrial city, with the help of Alexander Hamilton’s Society for Establishing Useful Manufactures. Its location straddling the Great Falls of the Passaic River gave the town a major source of energy to tap into. ¹³
April 10,	Pompton Township is created from parts of Bergen County’s Franklin

⁵ William Winfield Scott, “The Founding of Passaic 250 Years Ago,” 1929, Passaic County Historical Society (<https://lambertcastle.org/the-founding-of-passaic-250-years-ago>) : accessed 28 May 2024.

⁶ Britannica, Passaic County, New Jersey, United States, online encyclopedia (<https://www.britannica.com/place/Passaic-county-New-Jersey>) : accessed 14 Apr 2025.

⁷ William Winfield Scott, “The Founding of Passaic 250 Years Ago,” 1929, Passaic County Historical Society (<https://lambertcastle.org/the-founding-of-passaic-250-years-ago>) : accessed 28 May 2024.

⁸ Richard Cowen, “Passaic debuts Dundee Island Park with hope it will spur transformation in area of blight,” 2020, northjersey.com (<https://www.northjersey.com/story/news/passaic/passaic-city/2020/10/28/passaic-nj-opens-dundee-island-park-hoping-spurs-transformation/3752229001/>) : accessed 28 May 2024.

⁹ “1873 - City of Passaic Incorporated,” City of Passaic, <https://www.cityofpassaic.com/412/1873---City-of-Passaic-Incorporated>.

¹⁰ William Winfield Scott, “The Founding of Passaic 250 Years Ago,” 1929, Passaic County Historical Society (<https://lambertcastle.org/the-founding-of-passaic-250-years-ago>) : accessed 28 May 2024.

¹¹ William Winfield Scott, “The Founding of Passaic 250 Years Ago,” 1929, Passaic County Historical Society (<https://lambertcastle.org/the-founding-of-passaic-250-years-ago>) : accessed 28 May 2024.

¹² John F. Snyder, *Bulletin 67, The Story of New Jersey’s Civil Boundaries 1606 - 1968*. New Jersey Department of Environmental Protection (<https://www.nj.gov/dep/njgs/enviroed/oldpubs/bulletin67.pdf>) : accessed 29 May 2024.

¹³ National Park Service, “City of Industry” (<https://www.nps.gov/pagr/learn/historyculture/the-birthplace-of-the-american-industrial-revolution.htm>) : accessed 29 May 2024.

1797	Township and Saddle River Township. ¹⁴ Once one of the largest towns in the county by area. <ul style="list-style-type: none">• March 10, 1834: West Milford breaks off from Pompton Township.• February 26, 1895: Pompton Lakes borough formed from Pompton Township.• February 23, 1918: Pompton Township was broken up into Ringwood, Bloomingdale, and Wanaque boroughs, each with their own commercial centers.¹⁵
February 7, 1837	Passaic County established out of the northern expanses of Essex County, and the western part of Bergen. ¹⁶ Concurrently, Manchester Township was formed from parts of Saddle River. It was whittled down over the next 71 years, with parts going to Wayne, Paterson, Totowa, Hawthorne, Prospect Park, and North Haledon; an April 8th legislation converted Manchester Township to Haledon borough. ¹⁷
April 2, 1868	Little Falls was created from portions of the former Acquackanonk Township. Parts of it will later be formed into other boroughs ¹⁸ : <ul style="list-style-type: none">• 1869: part to Paterson• 1907: part to Montclair, in Essex County• March 25, 1914: part to West Paterson borough
November 10, 2008	West Paterson borough renamed Woodland Park on November 10, 2008 ¹⁹

¹⁴ Wikipedia (https://en.wikipedia.org/wiki/Pompton_Township,_New_Jersey), "Pompton Township, New Jersey." accessed 29 May 2024.

¹⁵ David M. Zimmer, "100 years ago three boroughs were born while a township 'died'," 2018, northjersey.com (<https://www.northjersey.com/story/news/passaic/2018/02/15/100-years-ago-three-townships-were-born-while-another-came-its-end-pompton-township/333905002/>) : accessed 28 May 2024.

¹⁶ Wikipedia (www.wikipedia.org), "Passaic County, New Jersey." Accessed 17 May 2024.

¹⁷ John F. Snyder, *Bulletin 67, The Story of New Jersey's Civil Boundaries 1606 - 1968*. New Jersey Department of Environmental Protection (<https://www.nj.gov/dep/njgs/enviroed/oldpubs/bulletin67.pdf>) : accessed 29 May 2024.

¹⁸ John F. Snyder, *Bulletin 67, The Story of New Jersey's Civil Boundaries 1606 - 1968*. New Jersey Department of Environmental Protection (<https://www.nj.gov/dep/njgs/enviroed/oldpubs/bulletin67.pdf>) : accessed 29 May 2024.

¹⁹ Wikipedia (www.wikipedia.org), "Woodland Park, New Jersey." Accessed 29 May 2024.

Migration Routes



*A map of the Passaic River, the county's namesake which facilitated its industrial growth. In the 18th century, the Passaic was most useful as a migration route due to the canals connecting it with the Delaware River; the 1831 opening of the now-forsaken **Morris Canal**, and its expansions into Newark and Jersey City, carried anthracite coal to the reaches of Passaic County.²⁰*

Map courtesy of FamilySearch.

Law and Government

NJ State Library resources collected in a [2014 blog post](#) by The Legal Genealogist, and the timeframes they cover²¹

- [New Jersey Charters and Treaties](#): 1664-1756
- [New Jersey Colonial Ordinances](#): 1704-1728
- [New Jersey Constitutions](#): each of the three separate constitutions penned in 1766, 1844, and 1947, plus details on the constitutional conventions surrounding them

²⁰ "History of the District," New Jersey Sports & Exposition Authority (<https://www.njsea.com/history/>) : accessed 30 May 2024.

²¹ The Legal Genealogist, "New Jersey's Laws," 21 November 2014 (<https://www.legalgenealogist.com/2014/11/21/new-jerseys-laws/>) : accessed 3 May 2024.

- [New Jersey Session Laws](#): from the statutes of 1776 onward

Libraries and Archives

<https://www.google.com/amp/s/lambertcastle.org/library/%3famp> - The Elizabeth A. Beam Local History and Genealogy Library at Lambert Castle

- 3 Valley Road, Paterson, NJ 07503 (**TEMPORARILY CLOSED AT THIS LOCATION**). Genealogy club currently headquartered at Clifton Memorial Library, 292 Piaget Avenue, Clifton NJ 07011)
- Schedule an appointment at Passaic County Historical Society (PCHS) Library by calling **(973) 247-0085** or emailing library@lambertcastle.org.
 - Non-members of the PCHS must pay the museum fee.
- PCHS provides a bevy of [online collections](#), transcribing several of the archives' holdings. Also houses a few (difficult to decipher) [manumission records](#).
- **The library does not contain vital records (birth/death/marriage)**. To obtain those, visit the [NJ State Archives](#).

Pietro and Maria Botto House (American Labor Museum)

- **83 Norwood Street, Haledon, NJ**
- **(973) 595-7953**
- Historic landmark, a house that hosted assemblies for striking workers (part of the IWW) during the 1913 Paterson Silk Strike²²
- Rotating exhibits, themed around labor
- Open to visitors on Wednesdays - Saturdays from 1 p.m. - 4 p.m.; one can get an appointment at any time with a phone call²³
- **Non-profit: \$5 donations recommended**

Paterson Museum

- **2 Market Street, Paterson, NJ**
- **(973) 321-1260**
- Contains artifacts from Paterson's industrial history. Also displays an archive of the life of John Philip Holland, an Irish republican whose Fenian Ram was the first practical submarine deployed by a navy force.^{24,25}
- Open Monday - Friday, from 9:30 a.m. to 4:30 p.m.

New Jersey State Archives²⁶

- **225 West State Street, Trenton, NJ**
- **(609) 984-2396**

²² "American Labor Museum," Paterson (<https://www.patersonnj.com/attractions/american-labor-museum>) : accessed 29 May 2024.

²³ "American Labor Museum," American Labor Museum (<https://www.american-labor-museum.org/>) : accessed 29 May 2024.

²⁴ "Paterson Museum," Paterson (<https://patersonmuseum.com/>) : accessed 29 May 2024.

²⁵ Wikipedia, "John Philip Holland" (https://en.wikipedia.org/wiki/John_Philip_Holland) : accessed 29 May 2024.

²⁶ "Planning Your Visit," New Jersey State Archives, NJ government website (<https://nj.gov/state/archives/directions.html>) : accessed 30 Apr 2024.

- Vital records, land documents, probate records, military service papers dating back to 1664
- Searchable databases for marriage, death, land, probate, court, military, wartime and photographs are available. Different records can be ordered online or via mail. See https://wwwnet-dos.state.nj.us/DOS_ArchivesDBPortal/index.aspx. Visit this page often for new searchable databases.²⁷
- Available by [appointment](#). See site for current Microfilm Reading Room and Manuscript Reading Room hours.
- Parking: metered parking on West State Street or limited public parking in the State House Garage

Genealogical Societies and Publications

Genealogical Society of New Jersey

- A 20-page guide on what to find in the Passaic County Historical Society's archives: <https://www.gsnj.org/wp-content/uploads/2016/10/PCHS-Library-Guide.pdf>
- [D. Stanton Hammond Collection of Passaic County Records](#): alphabetically arranged index cards excerpting 19th century records, including death and marriage notices; church and cemetery records; and Reverend Fisher's 1824-1832 Paterson censuses.

Passaic County Historical Society Genealogy Club

- **Phone: (973) 247-0085**
- The society frequently publishes books on Passaic County's history such as *The Fallen of the Great War: WWI Casualties From Passaic County*
- It can be ordered online by filling out this form: <https://lambertcastle.org/wp-content/uploads/2018/09/wwi-book-order-form.pdf>. Lambert Castle is temporarily closed; mail to 292 Piaget Avenue, Clifton NJ instead.
- For more of their books, see [here](#). Forms to order these are linked in other sections of the guide.

Record Loss

There is no known substantial record loss in Passaic County's history.

Local History

William Nelson, *History of the city of Paterson and the County of Passaic, New Jersey* (1901, Paterson : Press Printing and Publishing Co.). Though left unfinished at the time of his death, [this book can be accessed](#) through the Internet Archive (*Archive.org*).

<https://www.ancestry.com/search/collections/11187/>

- Ancestry.com - Souvenir book of the Slovak Catholic Sokol golden jubilee : 1905-1955
- While nominally about the Catholic organization, this souvenir book contains valuable news articles and clippings that give insight into Passaic's manufacturing companies, such as Okonite (insulated cables, used for submarines) and Raybestos-Manhattan (rubber goods).

²⁷ "Searchable Database Index," New Jersey State Archives, NJ government website (https://wwwnet-dos.state.nj.us/DOS_ArchivesDBPortal/index.aspx : accessed 8 May 2024).

Reference Books

Anne Huber Tripp, *The I.W.W. and the Paterson Silk Strike of 2013*. (University of Illinois Press, 1987) is available . [This book can be accessed](#) through the Internet Archive (*Archive.org*).

Record Collections

General Collections

Ancestry.com: https://www.ancestry.com/search/places/usa/new_jersey/passaic/

FamilySearch.org:

https://www.familysearch.org/en/wiki/Passaic_County,_New_Jersey_Genealogy

New Jersey State Archives: vital records, probate records, court records, land records, military records. See above for record request and appointment information.

FindMyPast.com: *While Findmypast.com has a select few collections pertaining to Passaic County, it lacks a landing page for the locality.

Bible Records and Compiled Genealogies

<https://www.gsnj.org/gsnj-collections/bible-records-index/>

- Per the GSNJ website, the Bible and Family records collection usually housed in the Alexander Library has been temporarily moved to Trenton's New Jersey State Archives. Visit <https://www.gsnj.org> for the current status of this collection.

Cemetery Records

<https://www.ancestry.com/search/collections/11224/>

- Ancestry.com: Inscriptions from tombstones in the Old-Reformed Church burying ground covering a period of 160 years, 1737-1897.

<https://lambertcastle.org/wp-content/uploads/2018/09/pompton-plains-cemetery-book-order-form.pdf>

- George Van Riper and Maryjane Proctor, *Pompton Plains Reformed Church Cemetery: Inscriptions From the Graveyard of the Dutch Reformed Church at Pompton Plains, New Jersey* (2000, Passaic County Historical Society)
- Although the tombstone transcriptions made by Genevra Freenian have faded with time, the later transcriptions made by Edwin A. Doremus in 1931 were microfilmed by the LDS and compiled by George Van Riper in mid-1999.

Oswald Warner and Robert J. Hazekamp Jr., *Sandy Hill Cemetery and the Historical & Statistical Account of the Cemeteries of Paterson, New Jersey* (Passaic County Historical Society)

- Tracks a historical complex of cemeteries for multiple denominations. A form to order the book can be found [here](#).

- An open source list of cemeteries in Middlesex County can be found here: <http://www.usgwarchives.net/nj/middlesex/cemetery.htm>.
- The Genealogical Society of New Jersey also provides a list of the county's cemeteries, last updated in 2011. https://www.gsnj.org/wp-content/uploads/2016/09/GSNJ_CI_Middlesex.pdf

Census Records and Substitutes

<https://www.ancestry.com/search/collections/11223/>

- *Ancestry.com*: Census of Paterson, New Jersey, 1827-1832. Originally taken by Rev. Samuel Fisher; see Genealogy Societies section above.

<https://search.findmypast.com/search-world-records/passaic-county-and-atlantic-city-new-jersey-census-index-1885>

- *FindMyPast.com*: Passaic County and Atlantic City, New Jersey, Census Index, 1885 <https://www.gsnj.org/new-jersey-state-censuses/>
- New Jersey State Censuses, 1855–1915 (2017 Update)

Church Records

<https://www.ancestry.com/search/collections/11228/>

- *Ancestry.com*: List of Members and Baptismal Records Found in the Session Book Minutes of the West Milford Presbyterian Church

Pennsylvania and New Jersey, Church and Town records, 1669-2013 on Ancestry <https://www.ancestry.com/search/collections/2451/>

LDS Genealogy has compiled a list of Passaic County's church records, encompassing denominations from Reformed Dutch to Presbyterian to Episcopalian. Several of these indices are preserved online. <https://ldsgenealogy.com/NJ/Passaic-County-Church-Records.htm>

Some that stand out for different denominations include:

- Reformed Dutch
 - [*Preakness and the Preakness Reformed Church, Passaic County, New Jersey : a history 1695-1902*](#) - collected online by Ancestry.com, from the data of George Warne Labaw (New York: Board of Publication of the Reformed Church in America, 1902). Preakness Reformed Church currently in Wayne.
 - Other Reformed Dutch church records are likely to be found in the library of the Holland Society of New York
- Episcopalian
 - [*The Silver anniversary record of Saint Agnes' Episcopal Church, Little Falls, New Jersey, 1898-1923*](#) - recollections by the Church's reverends (Revs. Appleton Grannis, Ernest Wetherill Wood, Frederick Alfred Coleman, Robert J. Thompson, Robert B. McKay) of 25 years spent serving there. Reprinted from the vestry in 1923.
- Presbyterian

- [*List of Members and Baptismal Records Found in the Session Book Minutes of the West Milford Presbyterian Church*](#) - photocopy collected online by Ancestry.com, with the permission of Rev. Albert H. Manus (1964)
- Several German Presbyterian churches, most notably in Paterson
- Lutheran (**most commonly Swedish-American**)
 - [U.S., Evangelical Lutheran Church in America, Swedish American Church Records, 1800-1947](#) - records of baptisms, marriages, and burials at various Swedish Lutheran churches across the country, including Paterson's Zion Lutheran Church and Clifton's First Lutheran Church. Some records are in the Swedish language.
 - Sourced by Ancestry.com from Gustavus Adolphus College in Saint Peter, Minnesota and the Swedish Immigration Research Center at Augustana College in Rock Island, Illinois.

Rutgers' Special Collections contain records from [Congregation Adas Israel](#), an Orthodox Jewish synagogue in Passaic Township. These records date from 1939 to 1986; Rutgers separately stores a B'nai Brith Lodge charter which lists the Lodge's members.

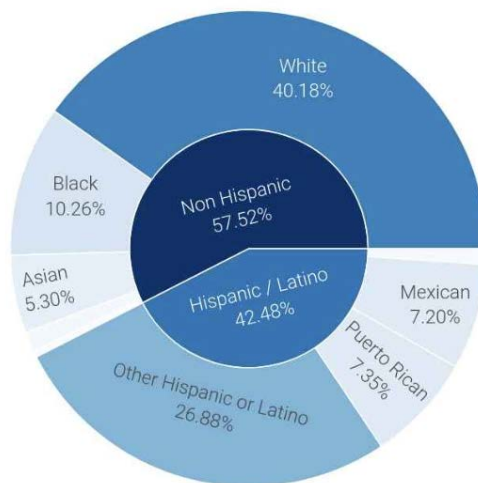
Court Records

The following records can be requested via the search form at https://www.net-dos.state.nj.us/DOS_ArchivesDBPortal/index.aspx or in-person.

- New Jersey State Archives, Veteran's Peddlers Licenses, 1931-1952
- Court of Common Pleas/Court of General Quarter Sessions Case Files, 1840-1942²⁸

Ethnic Records

Hispanic & Non-Hispanic population distribution, across race and origin



The population distribution of Passaic County as of 2021. Data courtesy of U.S. Census

²⁸ Passaic County - Clerk's Office, Courts & Miscellaneous," New Jersey State Archives, NJ government website (<https://www.nj.gov/state/archives/catcpaclerk.html> : accessed 8 May 2024).

Bureau, American Community Survey (ACS) 2017-2021 5-Year Estimates; visualization courtesy of [Neilsberg.com](https://neilsberg.com)

U.S., *Evangelical Lutheran Church in America, Swedish American Church Records, 1800-1947*: see *Church Records* section above.

Immigration and Naturalization

According to the New Jersey Transportation Planning Authority, the most common ethnicities of foreign-born Passaic County residents are:

- Dominican American
- Mexican American
- Peruvian American
- Colombian American²⁹

Immigration collections:

Carl Boyer, *Ship passenger lists : New York and New Jersey, 1600-1825*. Can check library availability [here](#).

New Jersey, U.S., County Naturalization Records, 1749-1986 on Ancestry.com:
<https://www.ancestry.com/search/collections/60084/> - menu drops down to Passaic.

New Jersey State Archives, Court of Common Pleas, **Naturalization Records, 1837-1906**.

These records can be requested via the Archives' search form at https://wwwnet-dos.state.nj.us/DOS_ArchivesDBPortal/index.aspx or in-person.³⁰

New Jersey Historical Records Survey Project: *Guide to naturalization records in New Jersey* (from 1941). To check library availability, click here:
https://rutgers.primo.exlibrisgroup.com/discovery/fulldisplay?docid=alma991002400169704646&context=L&vid=01RUT_INST:01RUT&lang=en

Passaic County Naturalization Records, 1837-1987. To order a search, click [here](#).

Land Records

Office of the County Clerk: <https://www.passaiccountynj.org/government/passaic-county-clerk/land-records>

- Address: 77 Hamilton Street, Paterson, NJ 07505
- Hours: 8 a.m. - 4:15 p.m. Monday through Friday; arrive no later than 4pm
- **Does not perform title searches.** For those, you can reach an Independent Title Searcher at 973-881-4769

²⁹ New Jersey Transportation Planning Authority, "Diversity Profiles"
(<https://www.njtpa.org/NJTPA/media/Documents/About-NJTPA/Federal-Regulations/Title-VI/NJTPA-Subregion-Diversity-Profiles-4-21-20.pdf>) : accessed 25 May 2024

³⁰"Passaic County - Clerk's Office, Courts & Miscellaneous," New Jersey State Archives, NJ government website (<https://www.nj.gov/state/archives/catcpaclerk.html>) : accessed 5 Jun 2024)

The following records can be requested via the New Jersey State Archives' search form at https://www.net-dos.state.nj.us/DOS_ArchivesDBPortal/index.aspx or in-person:

- Assignments of Mortgages and Indexes, 1851-1901
- Divisions and Partitions of Land, 1850s-1880s
- Mortgages 1837-1866 and Indexes, 1837-1916
- Building Contracts, 1849-1926³¹

Legislative Records

<https://www.ancestry.com/search/collections/11227/>

- Ancestry.com: Passaic County roads : New Jersey legislation in relation to roads.

New Jersey State Archives: Petitions and Other Papers relating to County Courthouses and the Establishment of Counties, 1760-1858

- Online guide to the archived petitions:
<https://www.nj.gov/state/archives/guides/sle00007.pdf>

The New Jersey State Library [digitally archives](#) legislative histories, which outline the motions through which state laws got passed. These records are tidily arranged by year, to convey the evolution of New Jersey's laws and state government.³²

Military Records

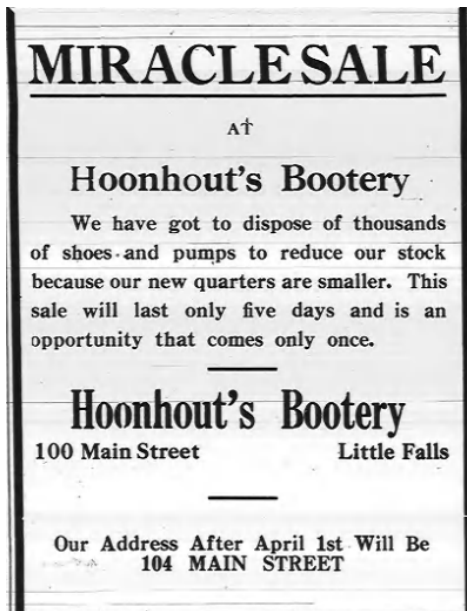
- NJ State Library: Official Register of the Officers and Men of New Jersey (https://www.njstatelib.org/slic_files/searchable_publications/reg/NJREGn343.html)
- Janette Maria Pardo, David A. Ranzan: *Passaic County, New Jersey military service records from World War I and other wars* (Closson Press, circa 2007).
 - The Historical Society of Pennsylvania (1300 Locust Street, Philadelphia, PA 19107) provides a [QR code](#) and a check for the book's current availability in their Pennsylvania Room.

Newspapers and Directories

- NJ State Library: List of digitized Passaic County newspapers:
<https://libguides.njstatelib.org/digitized-newspapers/passaic>.
- Most of the county's newspapers have been digitally archived by the [Old Fulton New York Postcards](#) website.

³¹ "Passaic County - Clerk's Office, Courts & Miscellaneous," New Jersey State Archives, NJ government website (<https://www.nj.gov/state/archives/catcpaclerk.html> : accessed 5 Jun 2024)

³² NJ State Library, *New Jersey Legislative Histories* (<https://repo.njstatelib.org/handle/10929.1/2>) : accessed 3 May 2024.



An ad in the Thursday, March 24, 1927 issue of the Little Falls Herald. Taken from [Old Fulton New York Postcards](#).

Passaic County libraries with archival newspaper holdings include:

- William Paterson University (online databases [here](#))

Probate Records

- Probate records can be obtained from the Passaic County Surrogate Court.³³ Surrogate Court located at **71 Hamilton St, Paterson, NJ 07505, in room #101**
- Certified copies must be paid for with cash or check. Credit cards are not accepted as payment.
 - Surrogate records are indexed on this [database](#). Request forms can be submitted with a \$10 search fee to:
 - **Passaic County Surrogate, County Court House Complex, 77 Hamilton Street, Paterson, NJ 07505.**³⁴
 - For each type of record, the additional cost is as follows:
 - Estate search: \$10
 - Copies: \$3 per page
 - Certified copy: \$50 for first two pages, \$5 for each additional page
 - Exemplified copy: \$75 for administration; \$84 for first two pages of will, \$5 per additional page
 - Release and refunding bond: \$10 for first two pages, \$5 for each additional page
 - Disclaimer: \$5 per page
 - Filing and recordings of all documents not listed: \$5 per page

³³ Passaic County, New Jersey Office of the Surrogate, "Will / Probate" (<https://www.passaiccountynj.org/government/passaic-county-surrogate/will-probate>) : accessed 20 May 2024.

³⁴ Passaic County Surrogate Index, Surrogate Information Request Form (http://web.passaiccountynj.org/Surrogate/info_form.aspx?Docket=201763&Last=JOHNSON&First=ALLAN%20R.&Date_of_Death=2011-03-07) : accessed 17 June 2024.

- Proof of mailing: \$5 per page
- Summons: \$25 per page³⁵
- The Surrogate Court now requires appointments for filing an [estate](#).³⁶
 - Court is open from 8:30 a.m. to 4:30 p.m. on Mondays - Fridays; the office is closed from 12:30 to 1:30 p.m. each day in that same window
 - Night court appointments run from 5 to 7 p.m.

The NJ State Archives holds wills and inventories from ca. 1670 to 1900, visit:

<https://www.nj.gov/state/archives/guides/sstse033rk.pdf>. The Archives also holds a collection called *Probate indexes and index cards (up to 1951)*, which can be requested via the Archives' search form at https://wwwnet-dos.state.nj.us/DOS_ArchivesDBPortal/index.aspx or in-person.³⁷

Vital Records (Birth, Marriage, Death)

Birth, marriage and death registration began on May 1, 1848. Records were recorded in a ledger format through May 1878. Certificates were issued beginning in June 1878. There are no documented Gretna Greens in the county.

The New Jersey State Archives has birth records issued up to 1923, marriage records issued up to 1950 and death records issued up to 1965. NJSA can perform searches of and provide certified copies of births up to 1924, marriages up to 1950 and deaths to 1950. The later marriage and death years can be searched in-person (as of 1 January 2025)

Genealogy copies of birth records issued after 1924, marriage records issued after 1950 and death records issued after 1965 must be ordered from the New Jersey Department of Vital Statistics; genealogy copies are called "Certifications." Certified copies of birth records issued after 1924, marriage records issued after 1950 and death records issued after 1950 must be ordered from the New Jersey Department of Vital Statistics. Certified or Certifications can be ordered online, via mail or in person. See <https://www.nj.gov/health/vital/> for instructions and costs. The walk-in center is located at 140 E. Front Street in Trenton.

The New Jersey State Archives has Chancery Court records, which contain divorces, granted up to 1947. This collection must be searched in person.

For divorces granted after 1947, consult the Divorce Records page on the Passaic County website.³⁸

³⁵ FindLaw, "New Jersey Statutes Title 22A, Fees and Costs 22A § 2-30," 2021 (<https://codes.findlaw.com/nj/title-22a-fees-and-costs/nj-st-sect-22a-2-30/#:~:text=Fees%20and%20Costs%2022A%20%C2%A7%20%2D30,-Current%20as%20of&text=Probate%20of%20a%20will%20of,Each%20additional%20page%2C%20%245.00.>) : accessed 17 Jun 2024.

³⁶ Passaic County, New Jersey Office of the Surrogate, Passaic County Surrogate Court Appointments (https://book.appointment-plus.com/d7yt8v90/?employee_id=10239#/) : accessed 20 May 2024.

³⁷ "Searchable Database Index," New Jersey State Archives, NJ government website (https://wwwnet-dos.state.nj.us/DOS_ArchivesDBPortal/index.aspx) : accessed 8 May 2024).

³⁸ <https://www.passaiccountynj.org/Home/Components/ServiceDirectory/ServiceDirectory/106/>

Genealogy copies of birth records issued after 1923, marriage records issued after 1950, and death records issued after 1964 must be ordered from the New Jersey Department of Vital Statistics; genealogy copies are called "Certifications." Certified copies of birth records issued after 1923, marriage records issued after 1940 and death records issued after 1940 must be ordered from the New Jersey Department of Vital Statistics. Certified or Certifications can be ordered online, via mail or in person. See <https://www.nj.gov/health/vital/> for instructions and costs. The walk-in center is located at 140 E. Front Street in Trenton.

Alternatively, ***certified copies of vital records may be obtained through any of the municipalities' Local Registrars.*** Consult [this list](#) for contact information.

Tax Records

New Jersey State Archives Tax Ratables collection, 1773-1822.

- A guide to the Passaic County ratables in their collection can be found here: <https://www.nj.gov/state/archives/guides/sas00001f.pdf>
- The actual records can be requested via the Archives' search form at https://wwwnet-dos.state.nj.us/DOS_ArchivesDBPortal/index.aspx or in-person.³⁹

For up-to-date tax records, the [taxrecords-nj.com](https://taxrecords-nj.com/pub/cgi/prc6.cgi?district=1201&ms_user=ctb12) website works just as effectively for Passaic County as it does for any other of the state's 21 counties. https://taxrecords-nj.com/pub/cgi/prc6.cgi?district=1201&ms_user=ctb12

Otherwise, tax records in New Jersey are usually detailed within land records. The Office of the County Clerk should contain information on taxation.

³⁹ Searchable Database Index, New Jersey State Archives, NJ government website (https://wwwnet-dos.state.nj.us/DOS_ArchivesDBPortal/index.aspx : accessed 8 May 2024).